

By The Numbers

\$288 Million Project cost



Months to complete

27 New or rehabilitated BRIDGES

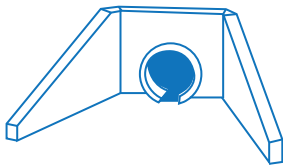
415,000 sq. feet of bridge deck

68 RETAINING WALLS constructed

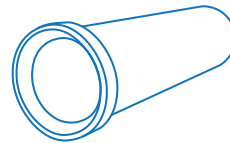
56 New LANE MILES built

230,000 VEHICLES A DAY

growing to 380,000 vehicles a day by 2040



650 inlet structures

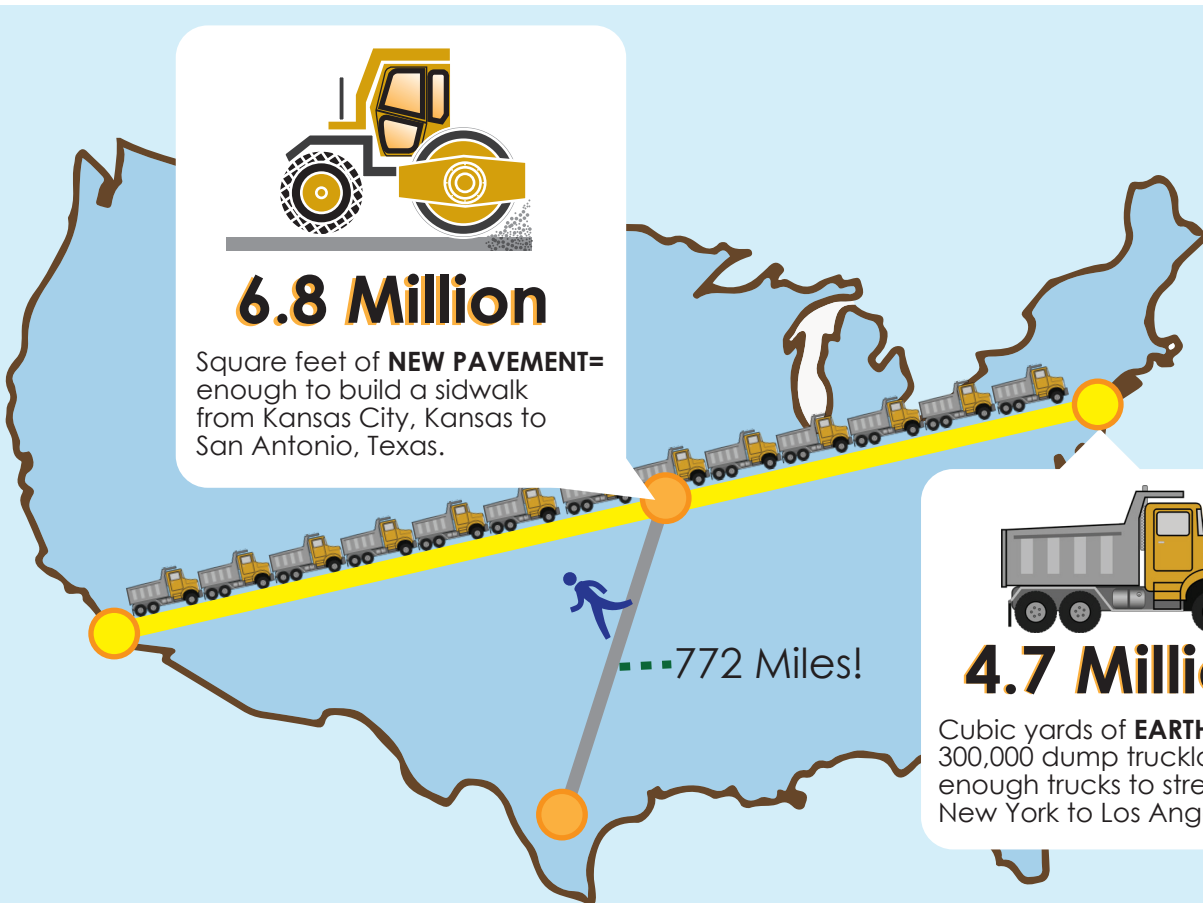


Drainage improvements include **14.6 miles** of drainage pipe



6.8 Million

Square feet of **NEW PAVEMENT**= enough to build a sidewalk from Kansas City, Kansas to San Antonio, Texas.



772 Miles!



4.7 Million

Cubic yards of **EARTH MOVED** = 300,000 dump truckloads of dirt, enough trucks to stretch from New York to Los Angeles!

Project Facts

Getting the Word Out



11,000 Twitter followers



2,600 Facebook fans



244,500
Website visits as of 11/2016



260 Public comments
as of 11/2016



270 Electronic newsletters



1,780 Text message subscribers

2,510 Text messages sent
as of 11/2016

#jocogateway

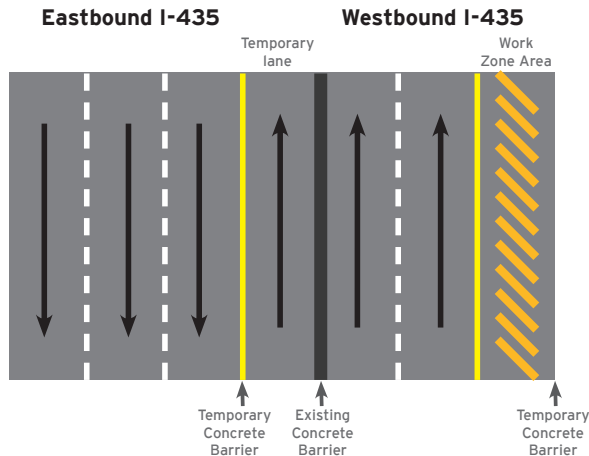
Keeping Traffic Moving



2,658 total [partial and full] closures put into place



91% were off-peak either 9 am - 3 pm daytime
or during overnight/weekends



Three through lanes of traffic were maintained during construction

Getting the Work Done

1,650,673 Construction hours worked

1,859 People have participated in safety training and worked on the project site in some capacity

480 Construction

300 Union employees

100 Design engineering staff

80 Professional staff